



SCI Outreach Package

2016





SCI VISION:

To co-create healthy, safe, sustainable communities where people can work, live, play and raise their children and where youth can move forward with confidence on their chosen path in life.

Summary

- The Sustainable Communities Initiative (SCI) is a collaborative partnership between companies, communities and service partners. SCI focuses on youth to engage in their own and their community's future.
- SCI Seeks to:
 - a) Grow, strengthen and deepen relationships between community and industry, as well as other organizations in the region;
 - b) Realize solutions that create shared benefits and value, by focusing on common interests between community and industry;
 - c) Share our learning and influence others to develop collaborative practices



Who are the SCI Partners?





Sekweha: “For the Youth”

- A group of community leaders got together and formed the Sekweha Board in 2009
- Foundations of Sekweha from community members and youth:
 - A safe place to call their own
 - Things to do
 - Land-based learning
 - Integrate culture in programs and school
- Sekweha has become centre of youth services in Janvier





LAYC: Lake Athabasca Youth Council

- LAYC started from community working together to provide support for youth-led activities in 2011
- Program summary:
 - Youth grow leadership and teamwork skills through monthly events, activities and trips, which they are involved in planning and executing with the support of adults
 - LAYC implements Right to Play youth mentorship programming daily





Experiential Learning Initiative

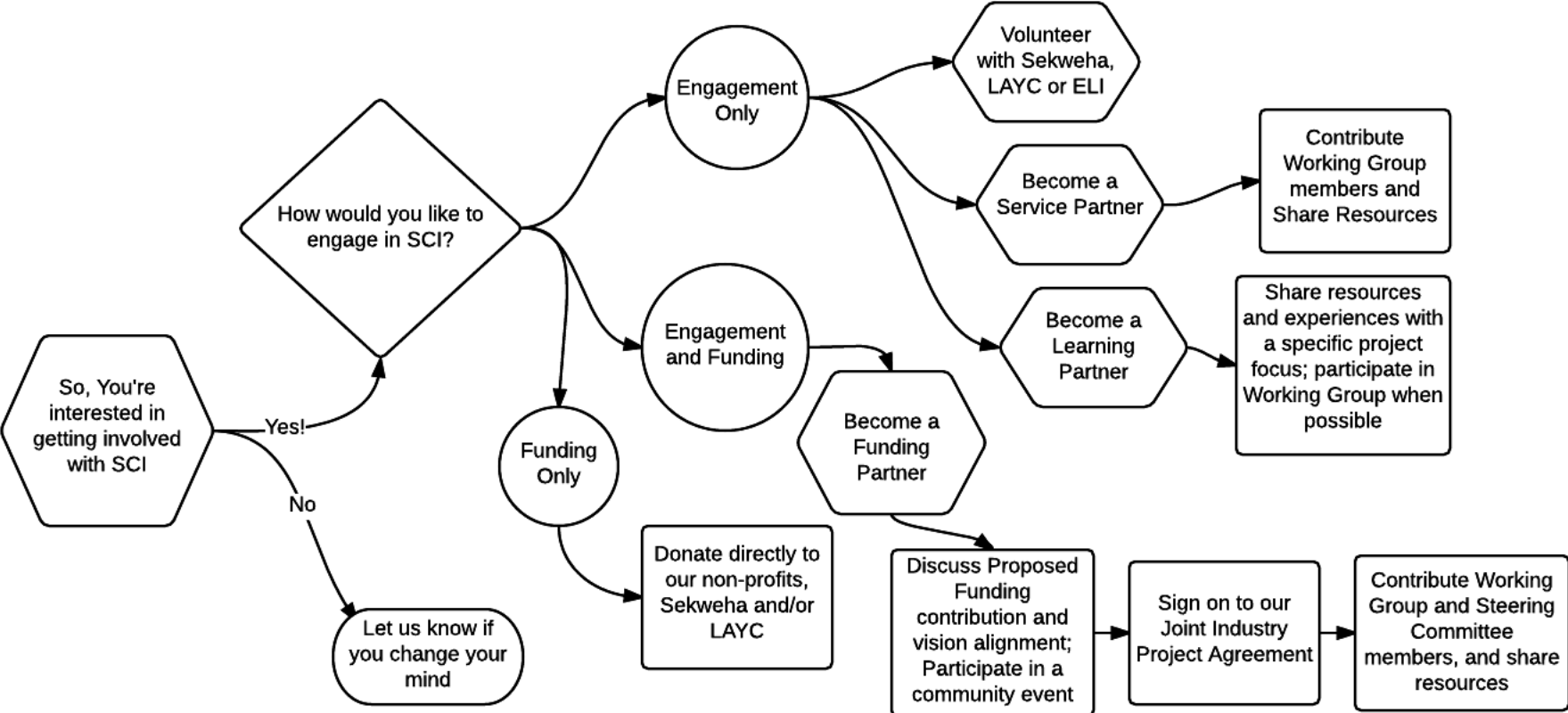
- Vision: For youth to *Walk in Two Worlds* through the collaborative integration of community, culture and curriculum
- SCI works with Sekweha and LAYC to develop and share experiential learning models that are effective in advancing learning for rural Aboriginal communities
- An Experiential Learning Gathering is held annually to come together to celebrate, enhance and expand experiential learning opportunities within the education system

SCI Growth

- SCI has focused on capacity-building in many areas and has made great strides to build capacity on budget management and governance with Janvier and Fort Chipewyan
- Building on this growth, SCI has developed a long term strategy for sustainability focusing on:
 - a) Establishing sustainable funding models of Sekweha, LAYC and ELI programming in order to create greater resilience,
 - b) Embedding a continuous improvement cycle for community programs to continue to grow, and
 - c) Deepening and creating more direct relationships between industry, community and service partners



Get Involved



Contact Us

Doug Reti, SCI Lead

John Van Ham, SCI Chair

Delores Cardinal, Sekweha Chair

Tania Dashcavich, LAYC Chair

www.sciconnect.ca

info@SCIconnect.ca

The logo for SCI is written in a bold, orange, cursive script. The letters 's', 'c', and 'i' are connected and flow together. The 'i' has a distinct dot above it. The overall style is modern and friendly.